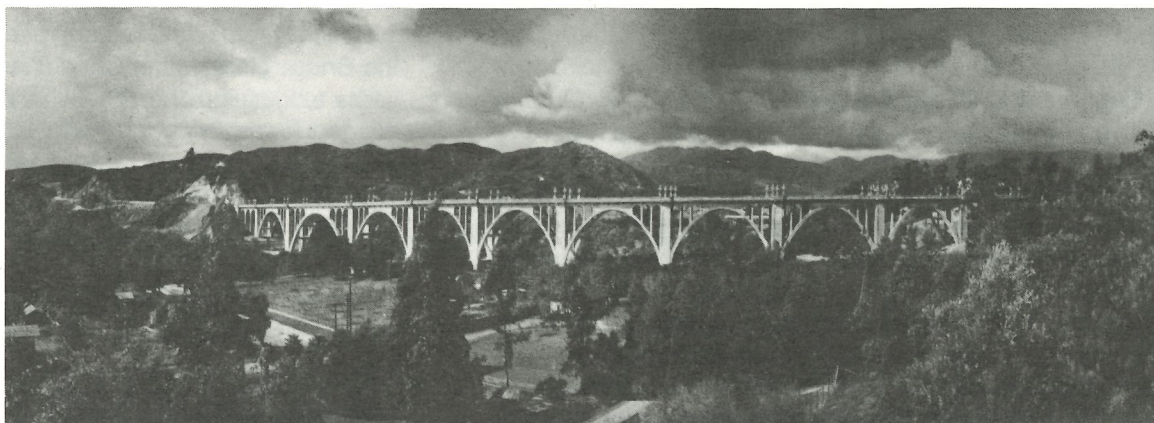


**Est. 1962**

*Photograph Courtesy of Pasadena Historical Society*

No. 26

February 1990

## NEWSLETTER

## OFFICERS OF WEST PASADENA RESIDENTS' ASSOCIATION

Co-Presidents	Donna Secundy Annette Serrurier
1st Vice President	Randy Wilson
2nd Vice President	Robert Takata
Secretary	Diane Philibosian
Treasurer	George McWilliams

## ADVISORY BOARD

William J. Bogaard, Mrs. John C. Chulay (Lloyd), Peter Brown Dolan, Everett B. Clary (Bud), Norman P. Clement, Mrs. J. Lawrence Judy (Ann), Charles P. McKenney, Thomas E. Parrington, Stevens Weller, Jr.

## BOARD OF DIRECTORS

Charles Berwanger  
Claire Bogaard  
Dory Burton  
Lyn Casani  
Marynette Fauvre  
James Gamb  
John Hinrichs  
Alison Hutchings  
Virginia Kimball  
George A. McWilliams  
Robert G. Melissa  
Diane Philibosian  
Steven Reyes  
Paul Secord  
Donna Secundy  
Tom Seifert  
Annette Serrurier  
Robert Takata  
Randy Wilson

## A NOTE FROM THE EDITORS

The purpose of this newsletter is to inform the residents of the West Pasadena and San Rafael areas about neighborhood issues of possible interest. It is the goal of the West Pasadena Residents Association to keep the newsletter informal and informative. Articles, comments, suggestions and help are welcomed!

The boundaries of W.P.R.A. are:

on the north — Colorado Boulevard  
on the south — City of South Pasadena  
on the east — Fair Oaks Boulevard  
on the west — City of Los Angeles

Newcomers to West Pasadena are welcome to join the West Pasadena Residents Association (W.P.R.A.). Dues are \$8.00 a year for a family membership. Contributing memberships are \$25.00 a year. Membership donations are used to offset the cost of printing and mailing newsletters and announcements.

This time of year, we cordially invite all residents to renew their membership in the West Pasadena Residents' Association. All newcomers to the neighborhood are warmly welcomed and encouraged to call any of the listed Board Members or Officers with questions about West Pasadena Residents' Association or any neighborhood issues of interest.

Thank you all for your support of WPRA!

Donna B. Secundy  
(213) 681-0484

Annette Serrurier  
(818) 799-2556

## W.P.R.A. MEMBERSHIP MEETING

To Be Announced soon  
Watch for a postcard with information  
about the date, location and program.



## A REPORT FROM CITY DIRECTOR KATIE NACK

Over the past 2 years families living along South Orange Grove and streets branching off of it have been working with me and city staff to work out a plan to restore and preserve this historic street. Part of that plan resulted from a need to improve safety at major intersections. This was accomplished by installing left turn arrows at California and by placing No Left Turn signs at Del Mar.

We have been able to combine three separate projects into one so that the street will have to be torn up only one time. The restoration is scheduled to begin in June, 1990 and be completed by October, 1990. Notices to residents about exact times various elements will occur will be distributed as the time draws nearer.

To be certain that we all understand what will take place, I am borrowing the following description of the project from a public works memo. The roadway will be resurfaced with a 2-1/2 inch reinforced asphalt concrete overlay.

Existing curbs will be removed and new concrete curbs and gutters will be constructed along both sides of the street with wheelchair ramps at corners. The width of the roadway will remain 48 feet between curbs as it currently measures. A previous proposal to widen the street has been abandoned.

The old, deteriorated underground conduit and wiring of the bronze post-top street light poles will be replaced. These historic light poles will be removed from their existing foundations and reinstalled on new concrete foundations behind the new curbs. Although the poles will shift slightly in the north-south direction, they will remain in the same straight alignment along the street as at present. This work is part of the Infrastructure Preventive Maintenance Program which the city has funded over the past 2 years calling for the systematic resurfacing and slurry sealing of all asphalt streets throughout the city.

Many months ago I suggested to a member of the Cultural Heritage Commission that the Commission might want to consider formalizing the historic significance of South Orange Grove as a means of preserving the beauty of the street. This restoration project assures that the character of the street will be unchanged and will continue to grace the Southwest portion of the City well into the next century.

## NEIGHBORHOOD BRIDGES

Plans for the repair of the San Rafael Bridge have been revised and will be going out to bid shortly. Strengthening and repairing the picturesque bridge near Laguna Road will not cause any significant changes to its current design. It has been suggested that some of the overgrowth be trimmed to expose the concrete balustrade along Laguna Road. The bridge will be closed for several months during its repair.

The Colorado Bridge was closed as a safety measure following the Bay Area Loma Prieta earthquake. It is expected that actual work on the 1913 bridge will begin mid-year and will continue for approximately two years. The upper deck will be removed; the lower arches will be seismically reinforced; and the upper deck will be rebuilt in its current design.

Special thanks to the many persons at City Hall and on the Bridge Restoration Committee who worked for many years to develop the rehabilitation plan and to find the needed funds for this popular landmark bridge.

## THE WAR MEMORIAL FLAGSTAFF

For several years, the flag pole at the northeast corner of Colorado and Orange Grove has been missing. Part of the monument has been removed because of its weakened condition. Once the flagstaff was removed, however, discussions at the City began regarding its possible relocation. The most recent plan calls for the return of the flagstaff to its earlier position by the Norton Simon Museum.

The War Memorial Flagstaff; erected in 1926 in memory of World War I fallen soldiers, was designed by Architect Bertram Goodhue and was executed by prominent sculptor Lee Lawrie. Both Goodhue and Lawrie were friends of Caltech Scientist George Ellery Hale who planned the memorial. Originally, the monument was located in the middle of the intersection but was relocated to its present corner in 1948. Southwest Pasadena resident Megs Meriwether deserves our thanks for keeping a close watch on the missing flagstaff and continually urging for a prompt return of the treasured memorial.

## TREES AND STREETLIGHTS

There is no doubt that the City's residents cherish the varied trees that are found throughout Pasadena. Many persons wish to maintain the old streetlights which contribute to the City's unique ambience. At present, there are a number of "simmering issues" in neighborhoods across the city.

- On Grace Hill in Southwest Pasadena, residents are trying to protect a row of palm trees on a parcel recently sold and likely to be developed.
- On Locust Street in East Pasadena, a group of residents are actively collecting signatures to protest the planned removal of trees which are said to interfere with utility lines.
- In Old Pasadena, loud objections were voiced recently when several mature shade trees were removed and replaced with palm trees. (A compromise has been reached since which dictates that there will be a combination of shade and palm trees along Colorado Boulevard.)
- South Madison Avenue neighbors protested vigorously the proposed removal of streetlights south of California Boulevard. Those neighbors learned that the old standards and globes were being sold to a company in Visalia. The company is restoring Pasadena's old light fixtures and selling them as "historic light standards" to developers for new residential complexes around the state.
- As referenced elsewhere in this newsletter, approximately 150 residents in Southwest Pasadena attended a meeting last fall called for by Director Nack to discuss the proposed repairs for South Orange Grove Boulevard.
- Finally, both Pasadena Beautiful and Pasadena Heritage



have sent letters to the City requesting a review of City policies relating to the City trees and streetlights.

These many issues are now under discussion but other problems are yet to be addressed. Most often neighbors are not notified — in advance — of street widenings or a change in lighting systems. Trees are often "pruned" (or butchered ?) by inexperienced workers without any City supervision. Most residents do not understand that there is a prescribed "street tree" for each street in Pasadena. The City's tree replacement policies are not clear to the public.

WPRA residents may wish to add their voices to the discussions of trees and lighting of our neighborhood streets. Director Kathryn Nack and her Field Representative Betty Ho (818) 799-1925 will be grateful for your comments and ideas.

## NATIONAL CELEBRATION OF THE OUTDOORS

"The next five to fifteen years will be a critical period for Outdoor America. Decisions made between now and the year 2000 will determine the fate of America's remaining land and water resources . . . especially in urban and suburban areas." (Report of the President's Commission on Americans Outdoors, 1987.)

Communities across the nation are planning for a National Celebration of the Outdoors on Sunday, 22 April 1990 and continue to Sunday, 29 April. The City of Pasadena allocated funds for a coordinator to plan the Celebration here in Pasadena. Planting trees, beautifying streets, cleaning sections of our parks or public areas of litter are all suggested activities. Members of WPRA who would like to assist with the National Celebration — in a local way — are urged to call Tim Brick at (818) 792-2442. The City is looking to its citizens for support of this nationwide Celebration of the Outdoors.

"Next to liberty, our outdoor heritage is the finest legacy we can leave to our children."

## ARROYO SECO UPDATE

"Nature unspoiled here's spread:  
Native the oak and sycamore, at home the rocky bed . . ."  
excerpt from "Arroyo Seco" by Lon F. Chapin, 1930.

In recent months the Lower Arroyo Seco has become the focus of planning activity, discussions pertaining to various user groups, especially the Roving Archers and the Equestrian Patrol, and the start of clean up/repair, to this long neglected area.

Here is a status report.

### PLANNING EFFORTS:

Current planning efforts in the Lower Arroyo are designed to return the area to a semblance of its former natural state. Key plan concepts are the preservation of native vegetation, combined with the restoration of historic stone walls and new plantings of native species.

It wasn't that long ago that there was a year-round stream, lined with willow and alder, that deep pools of cold water were home to trout, and foxes and bears foraged in

the undergrowth along the length of the Arroyo. Don't worry, the bears won't be back; but, the stream, pools of cold water, alder and willows, and perhaps even a fox or two may in the not to distant future.

The City of Pasadena, Board of Directors, recently approved a "Master Plan for the Lower Arroyo Seco". This plan calls for a three step process to guide replanting, repair, and enhancement projects to return the arroyo to a more natural state.

The first phases of the plan are currently underway. These call for plantings and general clean up, repair of stone walls, and removal of the abandoned, vandalized restroom building. Subsequent phases include additional plantings, removal of the archery club and casting club building and replacement with a single structure more in keeping with the arroyo, realignment of current parking to make it less intrusive, and ultimately, removal of a portion of the flood control channel and restoration of a portion of the stream. This latter proposal is dependent on improvements to the Devil's Gate Dam. A careful analysis of stream designs will be required to ensure that the flood control requirements of the arroyo are not compromised.

Nearly half a million dollars has now been allocated for the Lower Arroyo, much of it from Santa Monica Mountains Conservancy grants. Did you know that the Lower Arroyo is part of the Santa Monica Mountains regional trails system and is therefore eligible for state monies? A County-wide parks funding bond act, scheduled for the November ballot, may provide all the money needed to complete the plan.

You will be hearing more about this project as it progresses. Implementation of various aspects of the plan call for review by the Parks and Recreation and Cultural Heritage Commissions, as well as for meetings with neighbors and user groups.

## ARCHERY IN THE ARROYO

For a number of months, the Parks and Recreation Commission and City staff have been reviewing the status of archery in the Lower Arroyo. This discussion began back in 1988 during the preparation of the Lower Arroyo Master Plan. While current City Ordinances allow for the continuation of existing uses in the arroyo, such as the archers and casting club, it was discovered that there was no formal agreement between the City and the archers.

Discussions have been ongoing ever since. Major areas of concern are safety and the accompanying liability for accidents, restrictions to areas used by walkers and joggers, intensification of use in the Arroyo, as well as questions pertaining to the basic appropriateness of the use. The recent installation of signs issuing warnings to persons entering the archery area has proved upsetting to a number of local residents who walk in this area.

In an effort to resolve the various issues surrounding archery use in the Arroyo, the Parks and Recreation Commission will be holding a special hearing on 'Archery in Pasadena', March 5, 1990 at 7:00 P.M. in the City Board Chambers, City Hall. All those interested in this topic are urged to attend this hearing and express their views. At a subsequent meeting of the Parks and Recreation Commission a recommendation concerning archers will be formulated and sent to the City Board for action.

*Continued on back page.*



## EQUESTRIAN PATROL

Pasadena is very fortunate to have the dedicated service of the all volunteer Equestrian Patrol. Since their formation several years ago, and with the support of the City Police Department, the Equestrian Patrol has made the Arroyo a safe place to visit. Equipped with portable radios, members of the patrol report illegal and suspicious activity directly to the police. However, the mere presence of uniformed, mounted individuals patrolling the arroyo has proven a clear deterrent to criminal activity and offers a level of safety not possible from normal police patrols.

A plan to help support the patrol by providing removable corrals is currently being explored by the City. Corrals for the sole use of patrol members, would be paid for with monies from a Santa Monica Mountains Conservancy grant. Plans call for approximately twelve corrals to be located within the City limits, adjacent to the South Pasadena boarder. Patrol members, under a license agreement with the City, will pay upkeep costs, including daily visits by a paid maintenance person.

The specifics of the corral plan are currently being clarified by the Police Department and Equestrian Patrol members. Residents in the vicinity of the proposed corrals will be contacted and final plans submitted to the Parks and Recreation Commission for recommendation to the City Board of Directors.

## DINING OUT IN THE NEIGHBORHOOD

New restaurants continue to open in Old Pasadena. Fleur de Vin has opened its doors within the past month and is found at the corner of Green and Raymond.

Catavinos, a Mexican Restaurant, with a pleasant Southwestern decor, is offering breakfast, lunch and dinner. It is located on Green Street between Pasadena Avenue and LeLacey.

On the northside of Colorado just east of Fair Oaks is a new Italian restaurant, Mi Piace. Reservations are suggested for this popular spot.

One half block west of Fair Oaks is the recently opened Chopstix which provides take-out service as well as lunches and dinner.

So plan a night out in nearby Old Pasadena!

4

West Pasadena  
Residents' Association  
Est. 1962

Post Office Box 50252  
Pasadena, California 91105-0252

Bulk Rate  
U.S. Postage  
**PAID**  
Permit #740  
Pasadena, CA

