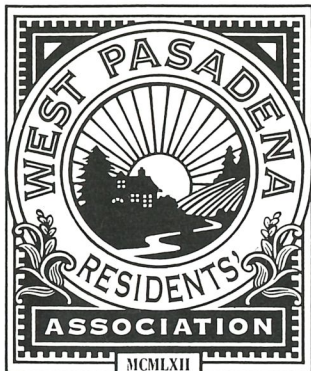


Box 29A



West Pasadena Residents' Association

NEWS

Established 1962

Pasadena, California

Spring 1994

Neighbors Invited to Annual Meeting April 27

President's Letter

BLUE LINE NOISE

As you all know, the Board of the WPRA has been quite concerned about the potential impacts of the Blue Line commuter train upon Pasadena. Although we all acknowledge the benefit of mass transit, there are serious issues that have confronted our neighborhood. The Pasadena City Council appointed a "committee" to examine the issues we raised, and made recommendations, with which we are basically pleased. However, we still have one BIG issue: NOISE from the HORNS.

You are well aware of the noise level of the existing horns from the Santa Fe train. Kind of charming once in a while, huh? Well, the Blue Line will blast a horn about every eight minutes from 5 a.m. to midnight. Think about how loud the horn is now, and how this may affect us all during our sleep, hearing the horns within our homes or even trying to use our back yards in the summertime. Awful! So, you say, turn down the volume of the horn. Sorry—the government requires that it must meet certain minimum levels.

So—potentially a big problem for our neighborhood.

Our worries are that if the horn situation is not solved before the Blue Line begins, we all may be living in misery. The residents in L.A. have been complaining for more than two years, and the problem with the horn and the Long Beach Line still hasn't been resolved.

We met with the project managers (the MTA) in early February to voice our concerns. They maintain that they are studying the issue and have ideas for improvements. Unfortunately, they have been unable to produce conclusive test data

WHO WE ARE

The West Pasadena Residents Association (WPRA) is the neighborhood organization for Pasadenans living in the area edged by the city's south and western boundaries, and by California and Colorado boulevards. We are Pasadena's second largest neighborhood group, with membership of more than 1000. The area includes condos, new single family homes, historic buildings and varied architectural styles from bungalows to grand mansions. Formed some 30 years ago, primarily as a social organization, WPRA has in later years focused on issues of special concern to residents of southwest Pasadena—the freeway, transportation, traffic flow, noise abatement and the management of state-owned properties. WPRA welcomes all residents and urges them to become involved in issues pertinent to this neighborhood.

that will show us that the problem even has a resolution. Accordingly, we have asked that the MTA provide our neighborhood with a test of the horns that they recommend so that we all can evaluate the issue. The MTA is considering this and will advise us of their decision soon.

This really is a "quality of life" issue that may affect us all. The Board urges all of you to express your thoughts regarding this matter to our city representatives and the MTA.

If the horns from the Blue Line won't be a problem, why not show us?

Pete Ewing

World Cup Soccer, Property Values, Set for Discussion

By Lucie Lowery

Olympian Willie Banks, Deputy Venue Executive Director for World Cup '94, will disclose plans for the games in the Rose Bowl this summer when the West Pasadena Residents Association holds its annual meeting April 27 at the U.S. Court of Appeals, 125 S. Grand Avenue. Refreshments will be served at 7 p.m., and the meeting will begin at 7:30.

All residents of southwest Pasadena are encouraged to attend the meeting to hear Banks discuss the impact of the games on the city. Tens of thousands of soccer fans from throughout the world will descend on Pasadena for a month from a first stage game here June 18, through the cup match July 17, as well as a varied slate of attendant special cultural events.

WPRA president Pete Ewing said the meeting also will feature a speaker on the current property values in WPRA neighborhoods. There will be an update on the Western Justice Center being established next to the courts building, as well as a report of the expected impact on the neighborhood of the Blue Line train which will link Los Angeles and Pasadena. The WPRA Board has been investigating the decibel levels of the train warning horns which will sound at several crossings in the city at eight-minute intervals.

A slate of new officers will be presented by a nominating committee, and voted upon.

The featured speaker, Willie Banks, holds an undergraduate degree in political

Please see page 5.

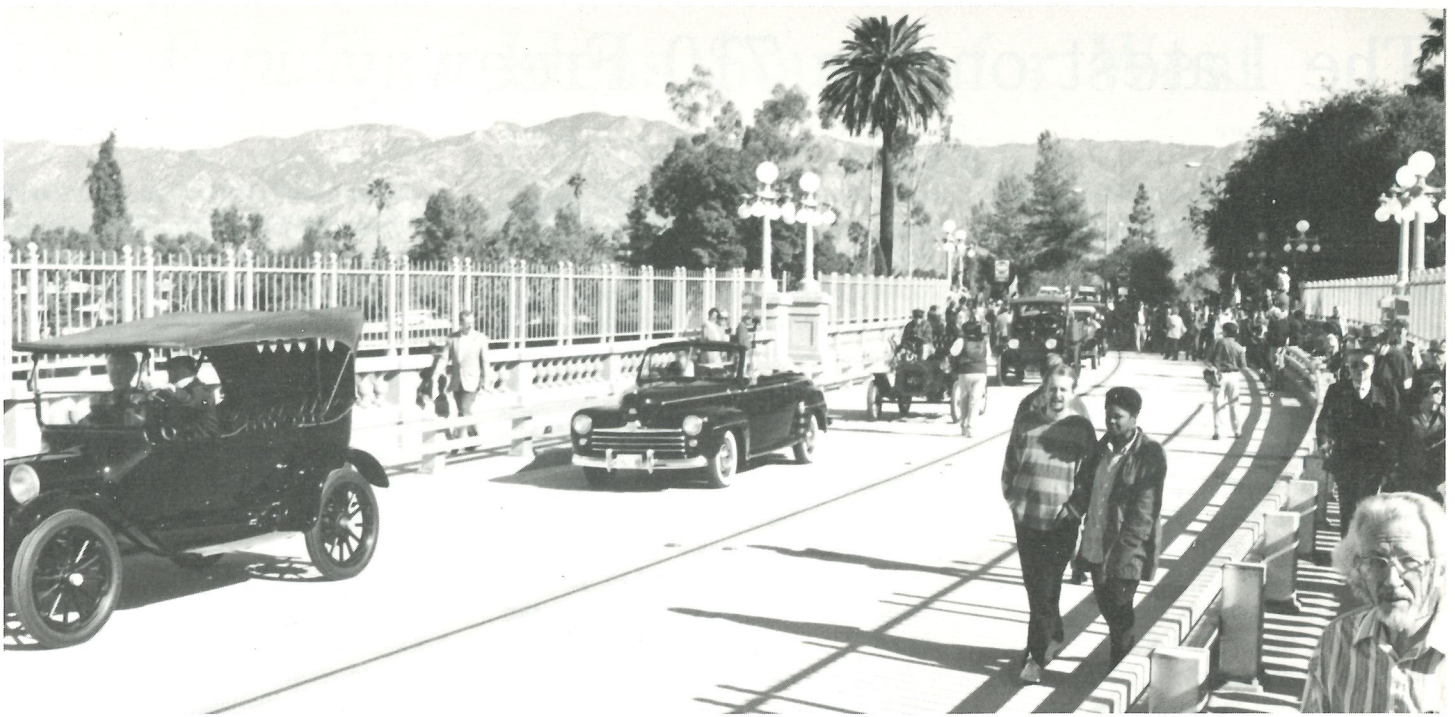
The Pasadena Scene...

- **SAN RAFAEL PARK.** The Pasadena Recreation and Parks Department has received recommendations on needed improvements for the San Rafael Park which were compiled at a neighborhood meeting in February. They include a small fence on the Colorado Street side, additional benches and tables, trees and/or arbors for increased shade, and more swings. Neighbors also suggested that the drinking fountain be moved away from the street. For more information, Call Neal Callahan at (818) 792-4059.
- **NO TO BEGGARS.** You are advised not to give money to panhandlers even though you may have mixed feelings when you ignore them. The City of Pasadena, Day One, The Homeless Affairs Advisory Committee, the Lutheran Social Services, Union Station Foundation, the Post Office and many local businesses advise against handouts to beggars. Giving change to strangers subsidizes a life on the streets, and does not bring necessary changes in their lives, according to the services agencies. Instead, make contributions to Pasadena's network of services who help homeless men, women and children find food and shelter and address the causes of their problems. For more information about meaningful help, call (818) 795-5052.
- **CALL ON PALS.** PALS is an acronym for a computer library service which allows patrons to learn what events are scheduled in town each day, months in advance. It's easy to access. Also, did you know you can reserve books by telephone? Thanks to Pasadena's overwhelming vote last year for a new tax to support the library, all branches are in full operation. Except on the day after the January earthquake—workers kept the doors closed for a day while they reshelfed thousands of books!
- **SAN RAFAEL SCHOOL FRIENDS.** San Rafael is a charming public school nestled in the heart of our neighborhood and supported with special gifts and attention since 1991 by the Friends of San Rafael School. Through generous contributions of time and money, the group has accomplished much. Improvements to the school grounds and facilities include such things as new play equipment, paint, sprinklers and landscaping on the outside, and, paint, windows, furniture and cabinetry on the inside. The group also organizes and sponsors open houses and informal gatherings to introduce neighbors with young children to the school. For more information about the support group or the school, call Sara Callahan at (818) 792-4059 or Carol Pallidini at (818) 449-5038.
- **STREETS AND TREES.** A total of 28 Westside neighborhood streets were resurfaced, sealed or reconstructed in 1993 or are due for work in 1994. Due this year are the resurfacing of Bellefontaine Place, the slurry sealing of California Boulevard from Grand to Orange Grove, Gordon Terrace from Waverly to Bellevue, Pleasant Way from Kaweah to Evergreen and the narrowing of Maylin Street between Orange Grove and Grand by two feet to save street trees.
- **MORE ON TREES.** The Plant Bank Recycle Center at the Jackie Robinson Center, 1020 N. Fair Oaks Ave.

accepts plant donations. For more information call Pasadena Beautiful at (818) 795-9704.

Also—volunteers are needed for the S.O.S. Tree Program to plant trees on the last Saturday of each month. Call John Coombs at (818) 289-7096 for more information.

- **PASADENA HERITAGE.** Pasadena Heritage has a new home at 651 St. John Avenue, the first house south of Singer Park. The turn-of-the-century house was bequeathed to the organization, complete with furnishings, by Clyde Madison. He had survived his wife Bernice and their son Roger, and with no other heirs and a long family association with Pasadena Heritage, he chose the city's historical watchdog organization to inherit the property. A 1909 issue of The Ladies Home Journal featured an article about the house, pointing out its newly stylish stucco exterior. The Madison legacy includes a number of period artifacts and pieces of furniture. Ann Mossman, executive director of Pasadena Heritage, said the organization is "hoping that probate will close soon, and is looking at options for the future of the house, and will meet with neighbors to discuss plans." The organization, presently housed at 80 W. Dayton St., exists to preserve fine examples of the city's varied architecture and neighborhoods. Pasadena Heritage has scheduled a "Grand Mansions" tour of four Pasadena homes on Sunday, March 20. Reservations may be made in advance by calling the office at 793-0617.
 - **GREAT STREETS.** Orange Grove Boulevard takes its place among 45 of the world's greatest streets in Allan B. Jacobs' handsome hardcover book called simply "Great Streets." The UC Berkeley professor, chairman of the Department of City and Regional Planning, after surveying streets in a number of cities to determine the characteristics that make them useful and inviting, classifies Orange Grove as a "great residential boulevard." Jacobs likes the alternating tall fan palms and the lower, deep green spreading magnolias interspersed with the opaque white streetlight globes. He appreciates the gentle curve at Colorado Boulevard and says the street is "extraordinarily compelling from a distance or moving at moderate speed in a car." The book is illustrated with drawings by the author, and is full of insights about the architectural as well as human factors that make streets great—for example, entryways and windows that offer a human connection.
- Prof. Jacobs listed Orange Grove Boulevard among such streets as Via dei Giubbonari, Rome; Stroget, Copenhagen; Las Ramblas, Barcelona; Cours Mirabeau, Aix-en-Provence, and Monument Avenue in Richmond, Virginia. (by Lorna L. Moore)
- **BEAUTIFUL GARDENS.** "California Terrace in Pasadena, California, is a little jewel of gardening in a city renowned for its flowers," writes Pam Waterman in the November/December issue of a new magazine, Beautiful Gardens. The article, illustrated with color photographs taken at the John Watkins, Jane Applegarth, Richard Franks, Otto Fick and Gail Lovejoy homes, is titled, "The Prettiest Street in Town." The magazine is published in Brentwood, Tenn., but has editorial offices in Dublin, Calif. The toll-free number is 1-800-677-6411.



Some of the crowd who turned out for the Colorado Street Bridge reopening Dec. 13, the 80th anniversary of its dedication.

Photo: Dan Little, Parsons

Hillside Ordinance Takes Patience

By Priscilla Taylor

I thought I knew the ropes. I had added 300 square feet of living space to my 800-square-foot house in 1988. Because I live in a hillside area of Pasadena, I had obtained multiple variances to get a building permit. When I decided to go back for a new building permit to expand one of my bedrooms, a 9' by 9' room, I expected the variances, but not the experience of dealing with the Hillside Overlay Ordinance.

The Hillside Ordinance as it now stands was put into effect in 1992, the result of several years of work by a citizen task force and city officials. It came about because of a desire to preserve the environment of open, hilly areas and to avoid mansionization and overdensity in established neighborhoods of Pasadena. It is hard to find fault with its purposes.

My introduction to the Hillside Ordinance began in July, 1993. In May I began the process of applying for a permit and early in July I learned that I would need an engineering report to describe the slope density of my property. Since I live in the area which is covered by the Hillside Ordinance, I would be limited in the number of

square feet I could add onto my house.

The amount of floor area allowable is determined by a formula and is dependent on the ratio of slope density to the size of the lot. The floor area of my house is slightly less than 1100 square feet. Since I was not building onto the slope nor disturbing the environment in any way, and I was extending an existing room by slightly less than 300 square feet, I was reasonably certain my project would be approved.

In August I received a notice that a hearing would be conducted in early September to consider my initial variance requests. Just before that hearing I learned that I would also have to apply for a variance to the Hillside Ordinance because my proposed 1400 square foot structure would be greater than that allowed on my 7,000 square foot lot.

The zoning officer was sympathetic to my disbelief that I could only have a 1100 square foot structure on my lot, but could not reassure me that the variance would be granted. I would have to wait until the reports had come in and another hearing was scheduled. The new hearing was

scheduled for November 3, 1993.

Shortly before the hearing, I went over my application with the zoning officer, who pointed out that there had been two engineering reports submitted. The first had come in as allowing the additional square footage, but it was found to be incomplete. The second report disallowed the addition because 300 square feet was more than the area permitted floor area ratio (FAR) according to the new calculations.

At the hearing on November 3, I was granted the variances. In my case, the hearing officer found the FAR formula of the Hillside Ordinance to be "overly burdensome and excessively restrictive as applied to the subject site."

During the time that I waited for the scheduled hearing I contacted Betty Ho in Kathryn Nack's office, and also Pete Ewing of the WPRA. The variances had cost more than \$1700 and the money was not refundable. I was looking for some explanation of the ordinance, and some support for myself, an average citizen who was up against a costly

Please see Page 6.

The Latest on the 710 Freeway

By Lorna L. Moore

The eternally proposed 710 Freeway Extension through Pasadena, South Pasadena and El Sereno is still being processed at Caltrans, as usual, though it has recently been dealt some potentially fatal blows.

Even if the Meridian Variation Route is formally adopted by the California Transportation Commission this spring, and even if the Federal Highways Administration gives final approval of the Environmental Impact Statement, the state may not be able to allocate the funding needed for the project, at least not in the current State Transportation Improvement Program (STIP). Though the state only contributes approximately \$150 million to the \$709-million project, the "flexible congestion relief" pot that the 710 money would come from has only about \$400 million for the current STIP, half of what had been anticipated due to the recession. This half is likely to fund more ready-to-go affordable projects. Furthermore, the state will be grappling with a \$5.2 billion shortfall in transportation funding through the 2010 planning period, which some believe will spell the end of new highway construction as mass transit gains more support.

Although projects are reprioritized every two years, the 710 will likely maintain its low priority since it is expected to be tied up legally for the

near future. Funding decisions will favor popular projects such as the Alameda Corridor, a project that is considered of national significance. The Alameda Corridor is a rail/truck facility to expedite the movement of goods from the ports to the rail switching yard in Los Angeles where trailers will be transferred to flat rail cars, thus relieving freeways of many trucks. It is considered key to future expansion of our ports but is also seen as an argument against the need to route trucks through the 710 corridor in the future.

It is probable that the earthquake will further impact the 710's chances for funding as state legislators will appropriately demand that the bridge retrofit program be stepped up. More than 1,000 bridges and overpasses still need to be retrofitted for earthquake safety statewide at a cost of \$964 million.

Perceived as having a potential impact on federal funding is the appointment of former South Pasadena mayor Evelyn Fierro as special assistant to Rodney Slater, the Clinton Administration's head of the Federal Highways Administration. Although Alhambra objected to her appointment, she began her job in January.

Legal battles over the 710 continue as Caltrans appeals a judge's decision holding that Caltrans must have

approval from South Pasadena to build the freeway, just as it must with other cities that will have streets permanently closed if the freeway were completed. Prior to the judge's decision, there had been a piece of legislation known as the Martinez Bill that was intended to prevent a single city from holding up the construction of a freeway. The judge agreed with South Pasadena that the legislation's time limit had expired, but now Assemblywoman Diane Martinez of Alhambra, the daughter of the bill's author, has introduced AB2556 to carry on her father's efforts to complete the 710. If the project ever is approved, South Pasadena has vowed to challenge the Environmental Impact Statement in court.

Both the *Los Angeles Times* and the *Pasadena Star News* have endorsed the Multi-Modal Low Build Alternative over the freeway completion, possibly marking a change in public opinion on the 710.

In response to WPRA efforts and with the help of Katie Nack, the city of Pasadena has recognized that whether the 710 is built or not, there is need to deal with the detrimental effects of the traffic in Southwest Pasadena now. Of particular focus is the through-traffic coming from the 710 Freeway terminus. The city has composed a citizen's group from Districts 6 and 7, known as the Southwest Traffic Study Committee, who will be looking at the Low Build Alternative as one source of ideas and data in their efforts to devise a plan to manage the traffic in these areas. The city has hired Korve Engineering to do a study of the Low Build Alternative to determine how such a plan would affect Pasadena's circulation.

The Low Build Alternative was refined by some 30 representatives from neighborhood groups throughout the 710 corridor, and local as well as national historic preservation and environmental groups. They were aided by a transport planner from Florida, Walter Kulash, nationally

Attention, Advertisers!

Do you want your sales message to reach the affluent discriminating residents of Southwest Pasadena? Naturally!

Do you know the ideal vehicle for your message? Read on—

The West Pasadena Residents Association News, published quarterly, will begin accepting a limited number of display ads for our next issue.

Target your obvious audience for your advertising budget. Reach the potential customer who is also your neighbor.

For details call Pete Ewing at (213) 236-4271.

Please see Page 6.

Vox Populi

This newsletter solicits comments from residents. Keep them short and to the point, and keep them coming! Please include your full name, address and phone number. Send them to the WPRa president, Pete Ewing, P.O. Box 50252, Pasadena, CA 91115.

THOSE PARKING METERS

We know that Old Pasadena lacks space for easy parking; hence the parking structures—and now the parking meters. Both are expected to make money for the city. But in the process, has parking in Old Pasadena become such a troublesome experience for Pasadena residents that they are avoiding the area? Of course we want visitors from all over the map to patronize Old Pasadena, and support from out-of-towners is vital—but the day-to-day use of Old Pasadena by the city's residents should be sought as enthusiastically.

I would like to propose numbered "Pasadena Resident" windshield stickers for those of us who live here which could be bought for \$20 a year and permit us to park in any metered space for the time limit on the meter without feeding in any coins. Overstaying the meter time could bring a ticket unless coins were then used. Laguna Beach has such a resident-friendly plan which works well.

Lucie Lowery

PICK UP NEIGHBORHOOD LITTER!

Being a walker and cyclist, I cover our West area extensively. I am appalled at the trash—particularly along the west bank of Arroyo Boulevard. Each day brings a fresh array of stuff tossed from passing vehicles. I, together with a group of my neighborhood children, periodically make forays with our red wagons, and have picked up an incredible amount of bottles, tins, Styrofoam receptacles, unfinished lunches, six packs of unopened beer, even clothing.

Ideas Sought for West Pasadena Parks



Katie Nack

on the western boundaries of the city are fortunate in having three parks of different sizes within easy reach for family use—San Rafael Park, Singer Park and Brookside Park.

With the passage of Los Angeles County Proposition A last year money is available during this budget year to enhance the two smaller parks—San Rafael and Singer. On two occasions during the month of February I asked city staff to meet with families who use San Rafael Park to hear what they thought. This resulted in excellent ideas to enhance the park for families with small children as well as for others who simply enjoy sitting and relaxing

Leaving one's trash is a global problem. I have experienced it on remote islands in the Caribbean, in isolated areas of Wales, even in pristine Seal Harbor, Maine—to name but a few secluded areas. Those who toss are those who have no respect, no care for the land; thus it is an educational problem. Perhaps mental laziness is a more apt description.

It certainly behooves each of us who have elected to live in this uniquely bucolic part of Southern California to bend over and pick it up when we spot trash. It could be that people who happen to see us will get the message. It is worth the effort. We need to keep our area as we keep our own property.

Barbara Dahn

Because neighborhoods are so important to families of all sizes, parks within our residential neighborhoods need our collective attention.

Pasadenans living

in a beautiful open space setting.

At the last discussion meeting a committee of residents volunteered to continue working with staff members as the group's ideas are developed into a package of park improvements to make safer and more inviting for families.

A similar process encouraging input from residents who use Singer Park will be followed sometime in March. If you would like to be included in that discussion, or if there are questions about the San Rafael Park process, please call Betty Ho, our Field Representative at 799-1925.

Annual Meeting...

Continued from Page 1

science and a J.D. from UCLA Law School, is a writer and teacher, but as an athlete his name is synonymous throughout the world with his record triple jump (58', 11-1/2"). *Time Magazine* dubbed him the "United States Ambassador of Track and Field." He was a track and field all American at UCLA for four years and in 1978 was named one of the NCAA's top five Scholar-Athletes of the Year. He was a member of the U.S. Olympic teams of 1976, 1980, 1984 and 1988. He served as chairman of the Ralph J. Bunche scholarship program for the UCLA Alumni Association in 1987-99, and has held leadership positions with the Athletics Congress of TAC, the governing body of track and field.

First stage games will pit Colombia and Romania in the Rose Bowl on June 18, and Sweden and Cameroon on June 19. The USA will play Colombia on June 22, and Romania on June 26. Other playoff games will be held in Chicago, Washington, Dallas, Orlando, Boston and New York/New Jersey. Semi-finals will be played here and in New York/New Jersey on July 7. Pasadena will host the third and fourth place game on July 16 and the cup match on July 17.

A number of West Pasadena residents are among the hundreds of volunteers who help stage the games in Pasadena, serving in various capacities.

STORYTELLING FESTIVAL IN THE AUDITORIUM AT THE PASADENA CENTRAL LIBRARY

- | | | |
|----------|-----------|--|
| March 19 | 1 p.m. | "Mothers, Maidens, & More, Folktales of Females" by Nancy Schimmel |
| March 29 | 10 a.m. | "Ameilia Earhart Is Alive" by Pamela Matson |
| April 16 | 2:30 p.m. | "Jewish Folktales from Around the World" by Joel Ben Izzy |
| May 25 | 7 p.m. | "Where the Wild Things Are" by Jan DeSal |

IMPORTANT NUMBERS FOR YOUR ROLODEX!

Recycling Yard Waste (Composting):	Waste Reduction Office at City Hall (818) 405-4449
Graffiti Hotline:	Paul Kaposy, (818) 797-9045
SMOG Offenses:	(800) CUT-SMOG (note license number, car model, date, location needed)
Street Tree Information:	Parks & Forestry, (818) 405-4321
Trash Collection Information:	(818) 405-4087
Code Enforcement Information:	(818) 405-4149
Neighborhood Watch:	Ronnie Manning, (818) 405-4551
Film Liaison:	Ariel Penn, (818) 405-4152

Pasadena to Host U.S. Neighborhoods 1994 Conference

Pasadena will be the site of the 19th Annual Neighborhoods USA Conference May 25-28, with WPRA hosting a neighborhood tour and informal dinner as part of conference activities. The dinner will be held at one of our member's homes on Thursday, May 26 from 4:30 to 7:30 p.m.

Volunteers who wish to assist in hosting the tour and dinner are asked to contact Robin Walther at (818) 793-7445. For additional information, including registration materials for the conference may call Neighborhood Connections at (818) 794-2934.

Founded in 1975 by a small group of neighborhood leaders, Neighborhoods USA (NUSA) is a national non-profit organization committed to building and strengthening neighborhood organizations. The annual conference provides the opportunity to share neighborhood concerns, successes, issues and ideas. Participants may choose from more than 60 separate workshops on timely topics such as traffic, safety, park improvements, and the nurturing of youth and neighbor relations.

710 Freeway...

Continued from Page 4

regarded for sustainable transport planning efforts. Approximately \$25,000 in funding to plan the project was raised by local community groups and other funds came from the city of South Pasadena.

Rather than focus on the 710 corridor alone, the plan addresses the entire San Gabriel Valley region the 710 was intended to impact. The cornerstone of the plan is mass transit which includes, an extensive bus circulator system in addition to the Blue Line and Metrolink lines, thus filling in north-south gaps through the valley which are not addressed in local and regional transportation plans. It seeks to take advantage of unused capacity on arterials by converting them to "smart streets" with the latest signal technology and changeable signs.

Hillsides . . .

Continued from Page 3

code that I didn't understand (i.e. the FAR and the formulas which determine it). I find this is the most disturbing aspect of the Hillside Ordinance. It is practically impossible for an ordinary person to verify that it is being administered accurately.

Pete Ewing invited me to the WPRA Board Meeting in November because a discussion of the Hillside Ordinance was on the agenda. Also present at the meeting were Mrs. Nack and Ms. Ho, along with Brookes Treidler and Nina Chomsky of the Linda Vista/Annandale Association. Mr. Treidler was on the original committee and later headed the hillside task force which developed the 1992 amended

Hillside ordinances. He reviewed my figures and found that the formula had been applied incorrectly and the code misinterpreted. The variance I had been granted was unnecessary. He offered to follow up his findings with a communication to the Zoning Department, and suggested that I was due a refund.

As of this writing this issue has not yet been resolved, but I am confident that it will be and that I will get a refund of the money I paid unnecessarily. I have learned that as an involved homeowner, I should question the application of the building ordinances and get verification of calculations. Learning to interpret the ordinances takes support from others and patience to get answers. In the meantime, my construction project is underway and I am looking forward to enjoying the new space.

NEWS Readers are looking for . . .

- the best cleaners, mechanics, gardeners . . .
- a barber who REALLY KNOWS hair textures . . .
- a caterer with more recipes than Wolfgang . . .
- a realtor with clients waiting to buy . . .

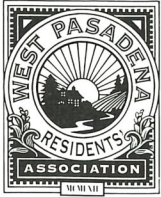
ADVERTISERS: Speak directly to our readers in the next issue of the WPRA NEWS (213) 236-4271.

Calendar of Events for Our Neighborhood

MARCH	5 & 6	AYSO Tournament, Brookside Park
	7	Swim America, swimming lessons for kids ages 4 & up begin and continue through the summer, AAF Rose Bowl Aquatics Center, (818) 397-4980
	12 & 13	Softball Tournament for adults, Brookside Park, Contact: Dave Johnson (818) 500-9480
	13	Flea Market, Rose Bowl, (818) 577-3100
	13	Pasadena Women's Aglow, 9 a.m. - 1 p.m., La Casita del Arroyo, Contact Carol Wales (818) 441-0275
	14	St. Patrick's Day Activities (stories, crafts, snacks) at San Rafael Public Library for kids of all ages, 3 p.m., Contact: Mary (818) 795-7974
	19 & 20	AYSO Tournament, Brookside Park
	26 & 27	Softball Tournament for adults, Brookside Park, Contact: Dave Johnson (818) 500-9480
APRIL	10	Flea Market, Rose Bowl, (818) 577-3100
	10	Pasadena Women's Aglow, 9 a.m. - 1 p.m., La Casita del Arroyo, Contact Carol Wales (818) 441-0275
	11	"Spring Is Here!," 3 p.m., San Rafael Library, stories, films & crafts for children, (818) 795-7974
	12-30	Square Dancers, overnight parking, Rose Bowl, (818) 577-3100
	17-23	National Library Week, Open House at San Rafael Library, (818) 795-7974
	16	Pink Floyd Concert, Rose Bowl, (818) 577-3100
	23	Earth Day, Brookside Park, Contact: Tim Brick (818) 792-2917
	27	WPRA Annual Meeting! Social 7 p.m., Meeting 7:30 p.m. at U.S. Court of Appeals 125 S. Grand Avenue; don't forget, mark your calendar for this important date.
MAY	6	Third Annual Swing & Splash Golf Tournament, AAF Rose Bowl Aquatics Center and Brookside Park, (818) 564-0330
	8	Flea Market, Rose Bowl, (818) 577-3100
	13	Pasadena Women's Aglow, 9 a.m. - 1 p.m., La Casita del Arroyo, Contact Carol Wales (818) 441-0275
	21	Canine Frisbee, Brookside Park Diamonds 2 & 3, 9:30 a.m. - 2 p.m., Contact Eldon McIntire (800) 423-3268
JUNE	4 & 5	All Breed Dog Show, 8 a.m. - 5 p.m., Brookside Park, Contact J.R. Alcantara (818) 285-5684
	12	Pasadena Women's Aglow, 9 a.m. - 1 p.m., La Casita del Arroyo, Contact Carol Wales (818) 441-0275
	18	World Cup Soccer, 4:30 p.m., Rose Bowl, (818) 585-2094
	19	World Cup Soccer, 4:30 p.m., Rose Bowl, (818) 585-2094
	20	H ₂ O Summer Fun Camp starts and continues through August 12th, AAF Rose Bowl Aquatics Center, (818) 564-0330
	22	World Cup Soccer, 4:30 p.m., Rose Bowl, (818) 285-2094
	25	Summer Reading Club begins & continues through August 13th, San Rafael Library (818) 795-7974
	26	World Cup Soccer, 1 p.m., Rose Bowl, (818) 585-2094
JULY	3	World Cup Soccer, 1:30 p.m., Rose Bowl, (818) 585-2094
	4	World Cup July 4th Celebration, Rose Bowl, (818) 585-2094
	10	Pasadena Women's Aglow, 9 a.m. - 1 p.m., La Casita del Arroyo, Contact Carol Wales (818) 441-0275
	13	World Cup Soccer, Semi-Finals, 4:30 p.m., Rose Bowl, (818) 585-2094
	16	World Cup Soccer, Finals, 12:30 p.m., Rose Bowl, (818) 585-2094
	17	World Cup Soccer, Finals, 12:30 p.m., Rose Bowl, (818) 585-2094
AUGUST	14	Flea Market, Rose Bowl, (818) 577-3100
	14	Pasadena Women's Aglow, 9 a.m. - 1 p.m., La Casita del Arroyo, Contact Carol Wales (818) 441-0275

ACTIVITIES OPEN TO THE PUBLIC EACH WEEK IN OUR AREA:

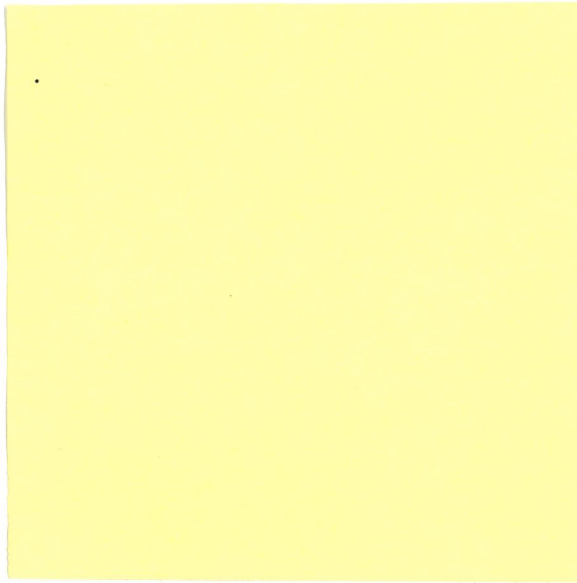
Monday - Friday	Major League Softball for Teens of all playing categories at the #2 & #3 baseball diamonds at Brookside, Contact Dave Johnson (818) 500-9480
Mon., Wed., & Fri.	Rusty Miller Tennis Academy, Brookside Park, (818) 446-0015
Monday	Story Time for Pre-schoolers, 3 p.m., San Rafael Public Library, (818) 795-7974
Tue., Wed., Thur., & Sat.	Pasanita Dog Obedience Club, Brookside Park, Contact Cathy Jahelka (818) 244-8912
Thursday	Knitting Group, 2 p.m., San Rafael Public Library
Every Sunday	Rollerblade Class in Rose Bowl Parking lot, 3 p.m. - 6:30 p.m., Contact Gravity Research (310) 455-2523



WEST PASADENA RESIDENTS ASSOCIATION

Post Office Box 50252
Pasadena, CA 91115-0252

BULK RATE
U.S. POSTAGE
PAID
Pasadena, CA
Permit #740



WPRA BOARD MEMBERS

1993-1994

President: Pete Ewing (213) 236-4271
Vice President: Shahen Hairapetian (818) 564-1783
Secretary: Mary Prickett (818) 441-4372
Treasurer: Carolyn Naber (818) 795-7675

Board Members:

Bob Brina	Lyn Miller
Neal Callahan	Lorna Moore
Margaret Campbell	Arthur Reeder
Barbara Dahn	Judith Reeder
Mac Grant	Harold Sadring
Leslie Clarke Gray	Rob Stebbins
David Hamlin	John Van de Kamp
Frank Jameson	Robin Walther
Lucy Lowery	Fred Zepeda
John Martin	

For more information about our Committees, please feel free to contact:

Blue Line:	Pete Ewing	(213) 236-4271
Membership:	Neal Callahan	(818) 715-6861
Neighborhood Assoc.:	Robin Walther	(818) 793-7445
Newsletter:	Judith Reeder	(818) 799-2543
Traffic:	Lorna Moore	(818) 799-6453
Zoning & Hillsides:	Barbara Dahn	(818) 796-5577